

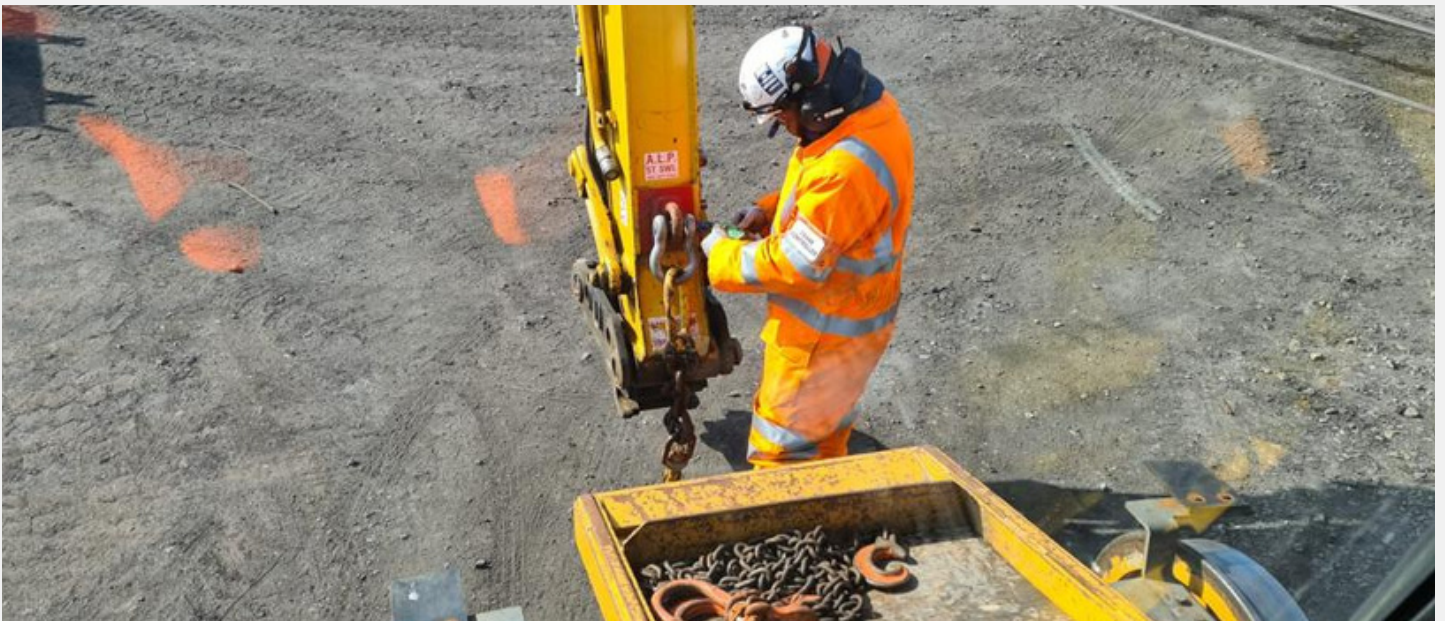


DOTTS DOCTORE ON TRACK TRAINING SERVICES

NEWSLETTER

ISSUE: 003

Train. Gain. Retain.



WHAT HAVE YOU MISSED?

DOTTS ROUND UP OF ACTIVITY, ACHIEVEMENTS AND INDUSTRY NEWS.



THIS MONTH WE ARE SHARING UPDATES FROM DOTTS AND WHAT THIS NOW MEANS FOR YOU.



www.dotts.co.uk

Train. Gain. Retain.



TOP OF THE DOTTs

There have been two big industry changes in recent months, the first being the traditional OTP Core module moving to E-Learning and the second being the introduction of ALO onto sentinel as the new OTP04 module. Both are causing slight confusion in their roll out, and has seen them land on the top of DOTTs frequently asked questions.

IS OTP CORE TO BE RECERTED ANYMORE?

OTP core is no longer required to be recerted and shall be allowed to expire naturally

IS THERE A POST MENTORSHIP ASSESSMENT FOR ALO?

There is no post mentorship assessment required. This competence has a 4-year expiry.



WHAT DOES THIS MEAN FOR YOU?

It is advisable that anyone with OTP core expiring in the forthcoming months sits the OTP core e-learning module as this is a mandatory requirement from NR. It is important to note that the competence will no longer show in sentinel or have a parent to child relationship on sentinel for any other module i.e., MC/CC or Operator.

Anyone who has completed the ALO course that has a "P" allocated against their award of OTP04 -> this will automatically be removed from NR as this has been placed on sentinel in error. If this is not removed in the forthcoming months approaching your expiry date, please contact your training provider who delivered ALO for you and they will escalate the issue.



07454462464

training@dotts.co.uk

Midlands Railway Trust, Ripley, Derbyshire

IT MIGHT ONLY BE SEPTEMBER, BUT WE'RE GOING TO SAY IT.....CHRISTMAS!

Before the grinch starts complaining that it is still too far away to get excited over Christmas, this is only from a personal perspective. Summer holidays are over and it is now time to start looking at how you can prepare for it professionally - it's coming and it will creep up fast.



FOLLOW US TO STAY IN THE LOOP!



DOTTS are fully booked for September, limited capacity in October and taking provisional bookings for November.

WHAT DOES THIS MEAN FOR YOU?

If you are requiring OTP recerts or initial training to keep your projects on track in the build up to the Christmas period, please ensure you do not leave it to the last minute. Take a look at our open course calendar and if you need something a little more niche please do not hesitate to get in touch with the team at DOTTS to support your training aspirations.

If you are interested in the support we can offer please contact training@dotts.co.uk for more information.

Train. Gain. Retain.





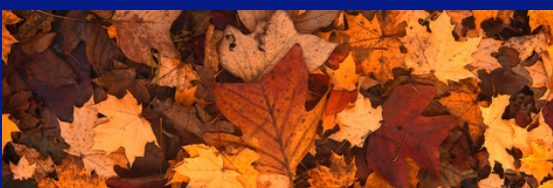
ALL THE LEAVES ARE BROWN, AND THE SKY IS GREY.....

With 20,000 miles of track and millions of trees growing along the railway, managing vegetation is hugely important to Network Rail. It's September and typically the end of bird nesting season so safe for increased activity around vegetation clearance.

WHAT DOES THIS MEAN FOR YOU?

If you are a company that specialises in this type of activity, DOTTS can support by offering training and recertification in the following:

- MC Group 3: Cutterhead & Operator Attachment 16 (Flail)
- MC Group 6: Chipper & Operator Attachment 31 (Wood Chipper)
- CC Group 4: Tree Management & Operator Attachment 28 (Tree Cutting Head)



www.dotts.co.uk



WHAT ARE DOTTS DOING TO SUPPORT THIS CHANGE?

DOTTS also have vast experience with RRV's, SRS and Unimog vehicles, Knuckle Boom Cranes and Tractor's - which are typically the most favourable host machines for carrying out such activity.

P.S. Extra DOTTS bonus if you can name the song!





DOTTS UPCOMING COURSES

Get in touch to book your place

OTP AT RIPLEY, DERBYSHIRE - SEPTEMBER

- 31st August & 1st Sept - Crane Operator Tandem Lift
- 5th & 6th Sept - MC MH + MC DPV
- 6th - 7th Sept - MEWP OP (2 days - for those with IPAF or equivalent)
- 6th - 8th Sept - HPV OP + Att 27
- 7th & 8th Sept - Slinger
- 8th Sept - CC6
- 13th Sept - Lift Planner PMA
- 20th Sept - MC2
- 20th - 22nd Sept - HPV Op + Att 27
- 21st Sept - MC3
- 26th - 27th Sept - MEWP OP (2 days - for those with IPAF or equivalent)
- 28th Sept - MC DPV

RECERTIFICATIONS AT RIPLEY, DERBYSHIRE - SEPTEMBER & OCTOBER

- PTS Recertifications
 - 22nd September
- OTP Recertifications
 - 11th September
 - 29th September
 - 6th October
 - 23rd October



COURSES ON THE HORIZON AT RIPLEY, DERBYSHIRE

- 4th Oct - Tandem Lift Planner
- 2nd - 13th Oct MC/CC Initial
- 10th Oct - Lift Planner PMA
- 23rd & 24th Oct - Open ALO courses
- 16th - 20th Oct - COSS Assessments (various locations)
- 27th Oct - Tandem Lift Planner

 07454462464

 training@dotts.co.uk

 Midlands Railway Trust, Ripley, Derbyshire